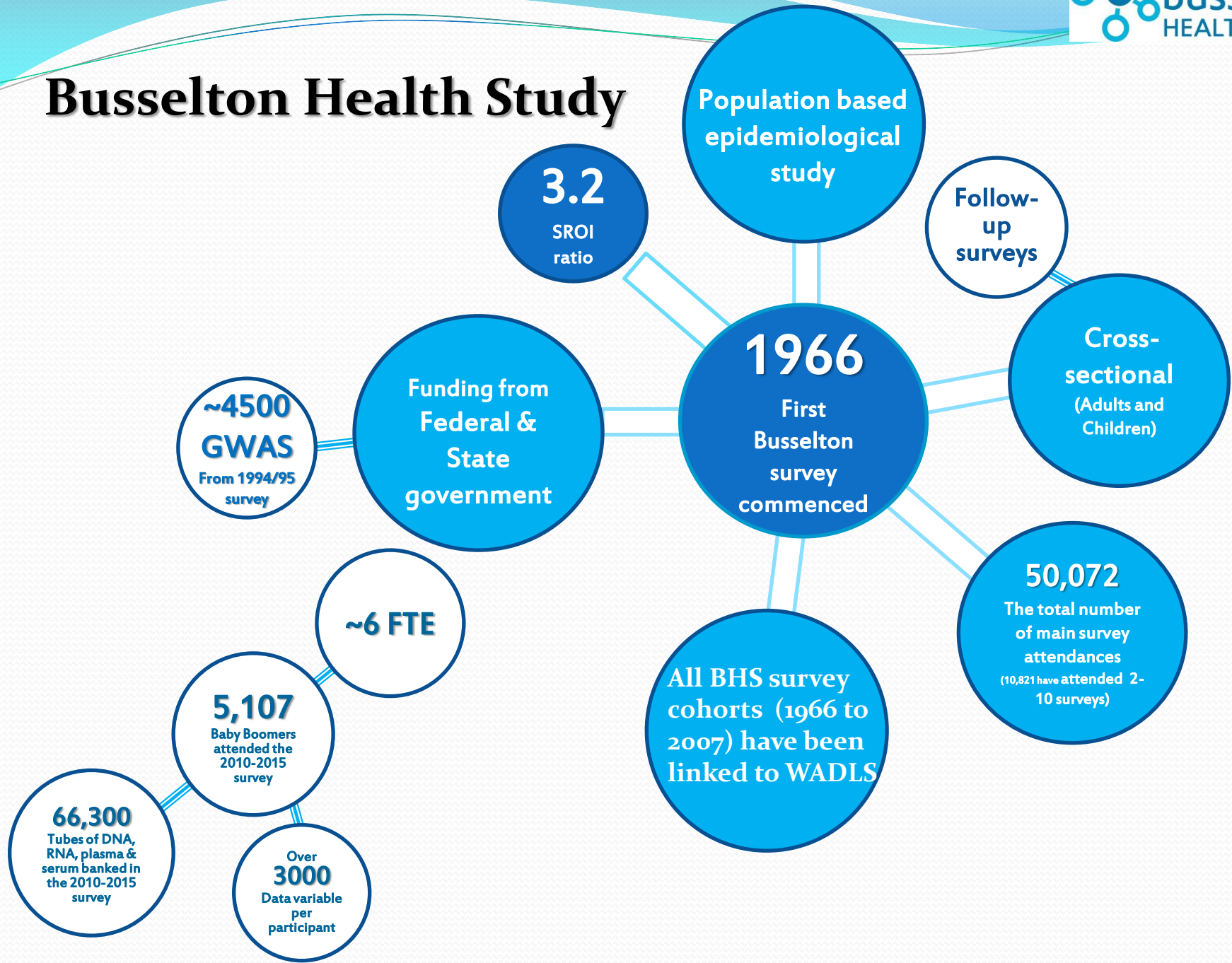


Busselton Health Study



Population based
epidemiological
study

Follow-
up
surveys

Cross-
sectional
(Adults and
Children)

1966
First
Busselton
survey
commenced

50,072
The total number
of main survey
attendances
(10,821 have attended 2-
10 surveys)

All BHS survey
cohorts (1966 to
2007) have been
linked to WADLS

3.2
SROI
ratio

Funding from
Federal &
State
government

~4500
GWAS
From 1994/95
survey

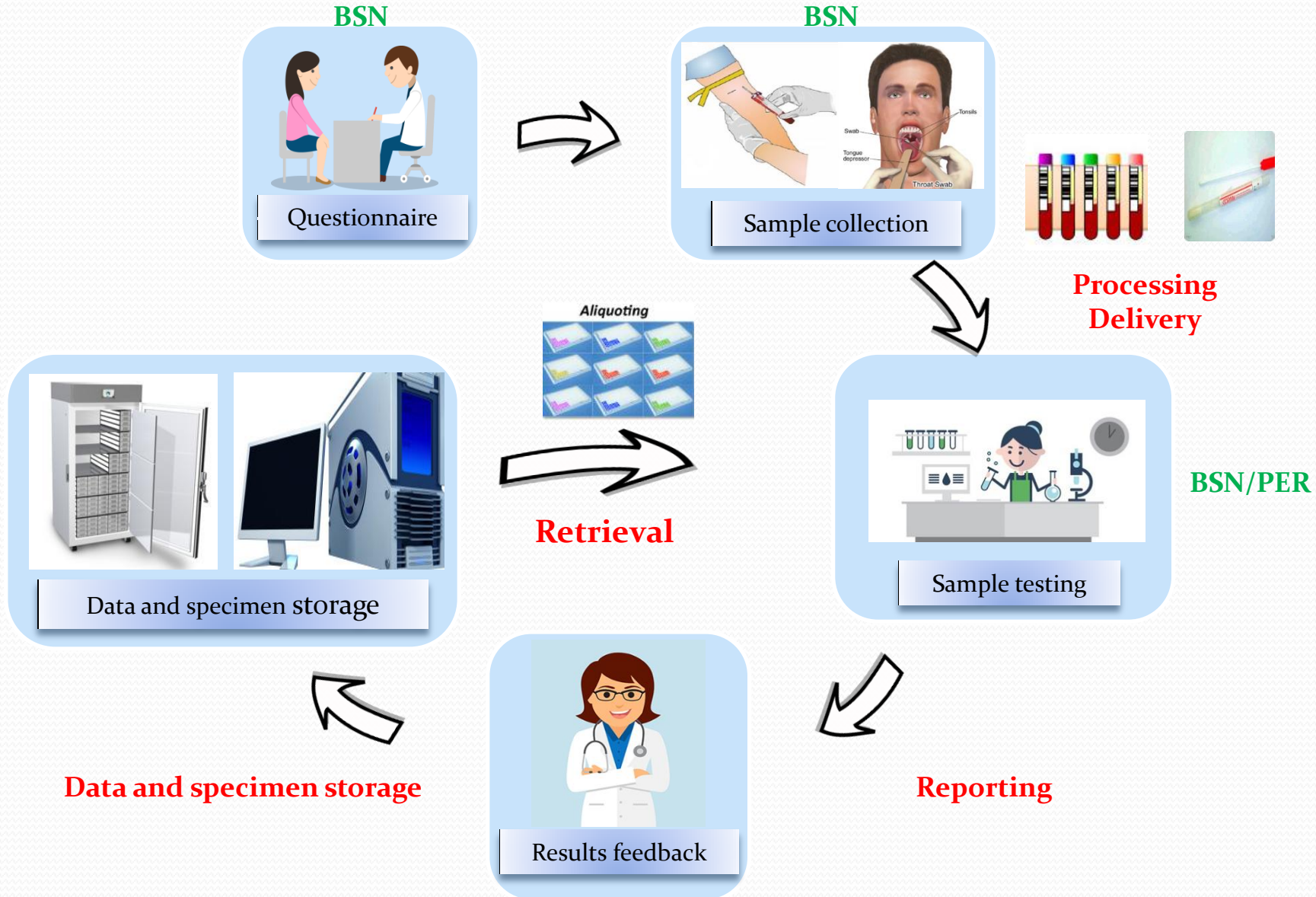
~6 FTE

5,107
Baby Boomers
attended the
2010-2015
survey

66,300
Tubes of DNA,
RNA, plasma &
serum banked in
the 2010-2015
survey

Over
3000
Data variable
per
participant

Key challenges



The Future

Sustainability
Security/integrity of data and samples storage
Data sharing and access
Economies of scale through collaborations

Data Sharing



Biobank Storage



Robotics



Collaborating partners:



With thanks to:

